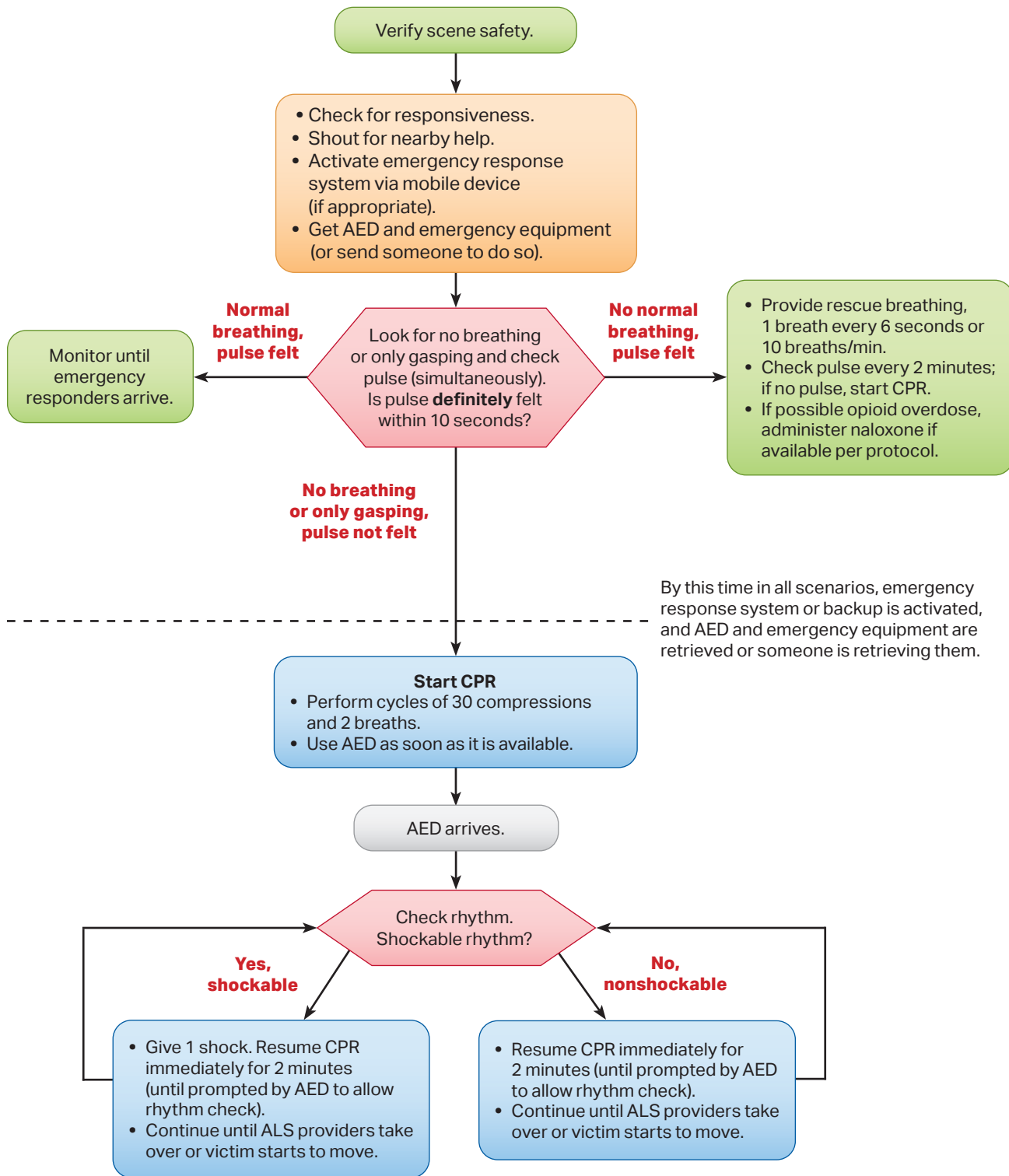
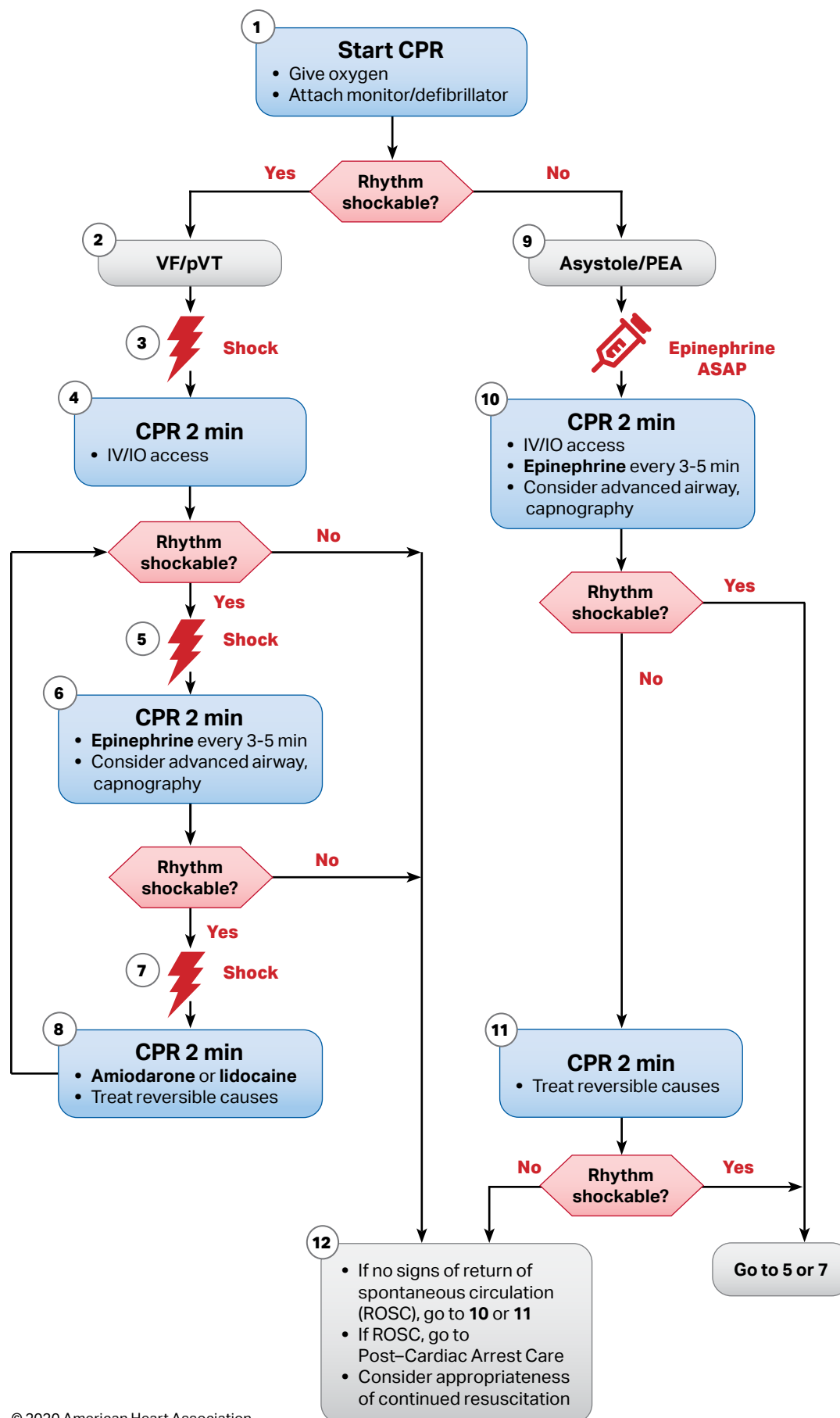


Adult Basic Life Support Algorithm for Healthcare Providers



Adult Cardiac Arrest Algorithm



CPR Quality

- Push hard (at least 2 inches [5 cm]) and fast (100-120/min) and allow complete chest recoil.
- Minimize interruptions in compressions.
- Avoid excessive ventilation.
- Change compressor every 2 minutes, or sooner if fatigued.
- If no advanced airway, 30:2 compression-ventilation ratio
- Quantitative waveform capnography
 - If PETCO₂ is low or decreasing, reassess CPR quality.

Shock Energy for Defibrillation

- **Biphasic:** Manufacturer recommendation (eg, initial dose of 120-200 J); if unknown, use maximum available. Second and subsequent doses should be equivalent, and higher doses may be considered.
- **Monophasic:** 360 J

Drug Therapy

- **Epinephrine IV/IO dose:** 1 mg every 3-5 minutes
- **Amiodarone IV/IO dose:** First dose: 300 mg bolus. Second dose: 150 mg.
- **Lidocaine IV/IO dose:** First dose: 1-1.5 mg/kg. Second dose: 0.5-0.75 mg/kg.

Advanced Airway

- Endotracheal intubation or supraglottic advanced airway
- Waveform capnography or capnometry to confirm and monitor ET tube placement
- Once advanced airway in place, give 1 breath every 6 seconds (10 breaths/min) with continuous chest compressions

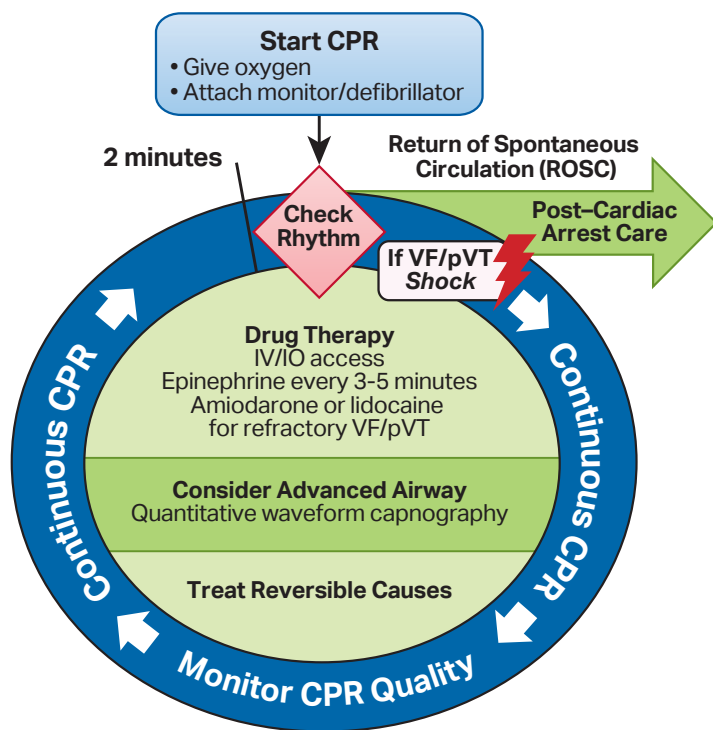
Return of Spontaneous Circulation (ROSC)

- Pulse and blood pressure
- Abrupt sustained increase in PETCO₂ (typically ≥40 mm Hg)
- Spontaneous arterial pressure waves with intra-arterial monitoring

Reversible Causes

- Hypovolemia
- Hypoxia
- Hydrogen ion (acidosis)
- Hypo-/hyperkalemia
- Hypothermia
- Tension pneumothorax
- Tamponade, cardiac
- Toxins
- Thrombosis, pulmonary
- Thrombosis, coronary

Adult Cardiac Arrest Circular Algorithm



CPR Quality

- Push hard (at least 2 inches [5 cm]) and fast (100-120/min) and allow complete chest recoil.
- Minimize interruptions in compressions.
- Avoid excessive ventilation.
- Change compressor every 2 minutes, or sooner if fatigued.
- If no advanced airway, 30:2 compression-ventilation ratio.
- Quantitative waveform capnography
 - If PETCO₂ is low or decreasing, reassess CPR quality.

Shock Energy for Defibrillation

- **Biphasic:** Manufacturer recommendation (eg, initial dose of 120-200 J); if unknown, use maximum available. Second and subsequent doses should be equivalent, and higher doses may be considered.
- **Monophasic:** 360 J

Drug Therapy

- **Epinephrine IV/IO dose:** 1 mg every 3-5 minutes
- **Amiodarone IV/IO dose:** First dose: 300 mg bolus. Second dose: 150 mg.
- **Lidocaine IV/IO dose:** First dose: 1-1.5 mg/kg. Second dose: 0.5-0.75 mg/kg.

Advanced Airway

- Endotracheal intubation or supraglottic advanced airway
- Waveform capnography or capnometry to confirm and monitor ET tube placement
- Once advanced airway in place, give 1 breath every 6 seconds (10 breaths/min) with continuous chest compressions

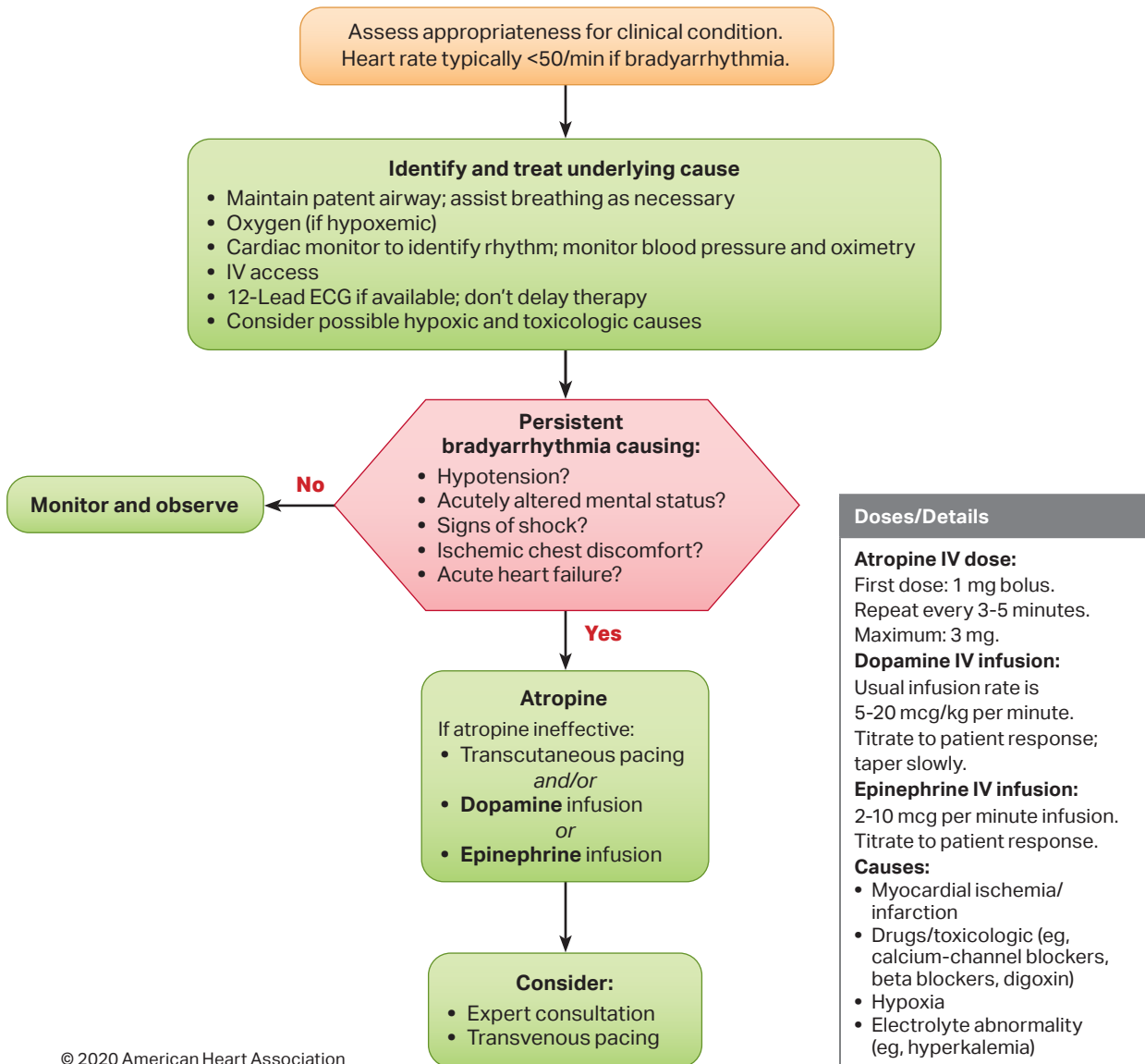
Return of Spontaneous Circulation (ROSC)

- Pulse and blood pressure
- Abrupt sustained increase in PETCO₂ (typically ≥40 mm Hg)
- Spontaneous arterial pressure waves with intra-arterial monitoring

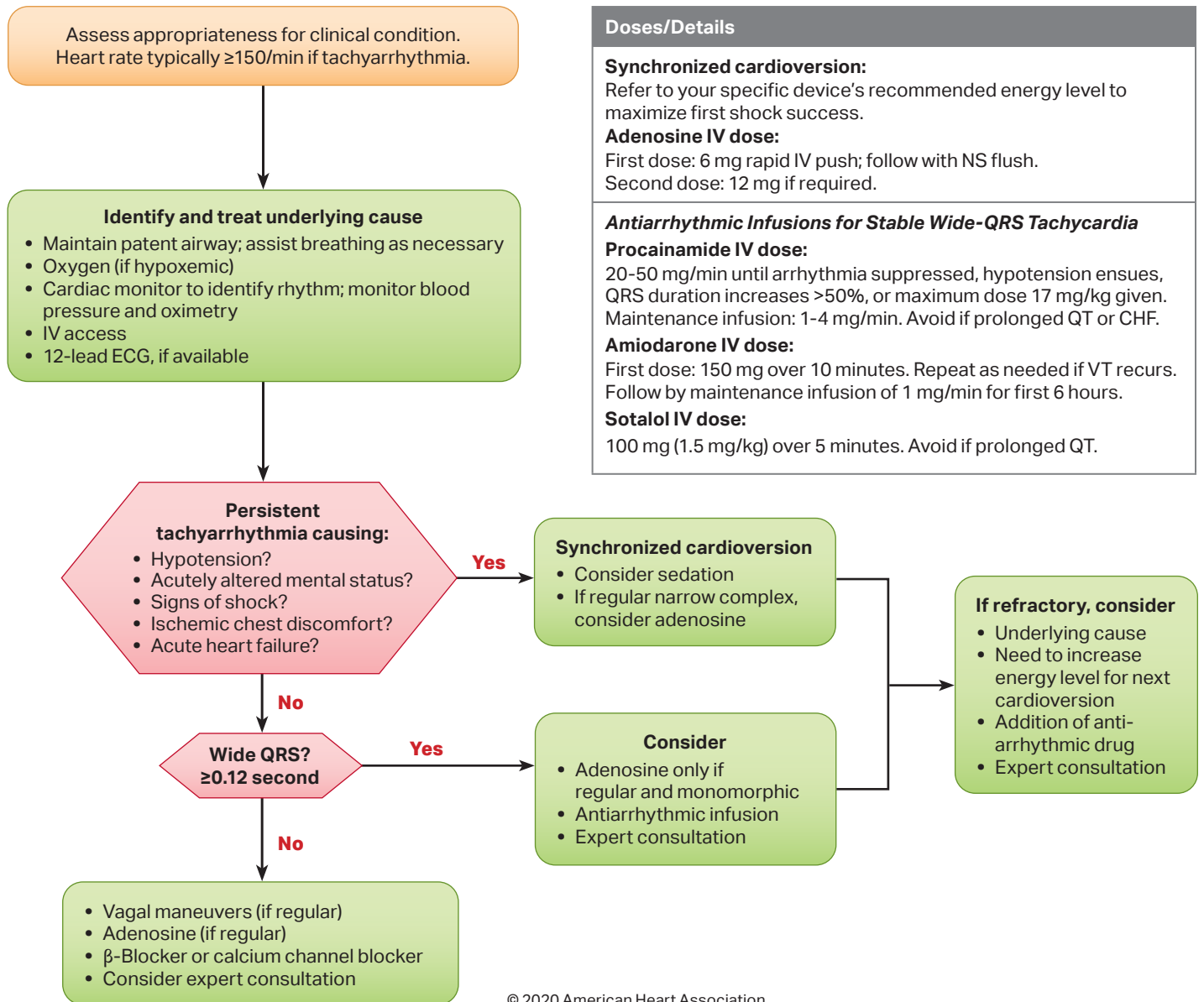
Reversible Causes

- Hypovolemia
- Hypoxia
- Hydrogen ion (acidosis)
- Hypo-/hyperkalemia
- Hypothermia
- Tension pneumothorax
- Tamponade, cardiac
- Toxins
- Thrombosis, pulmonary
- Thrombosis, coronary

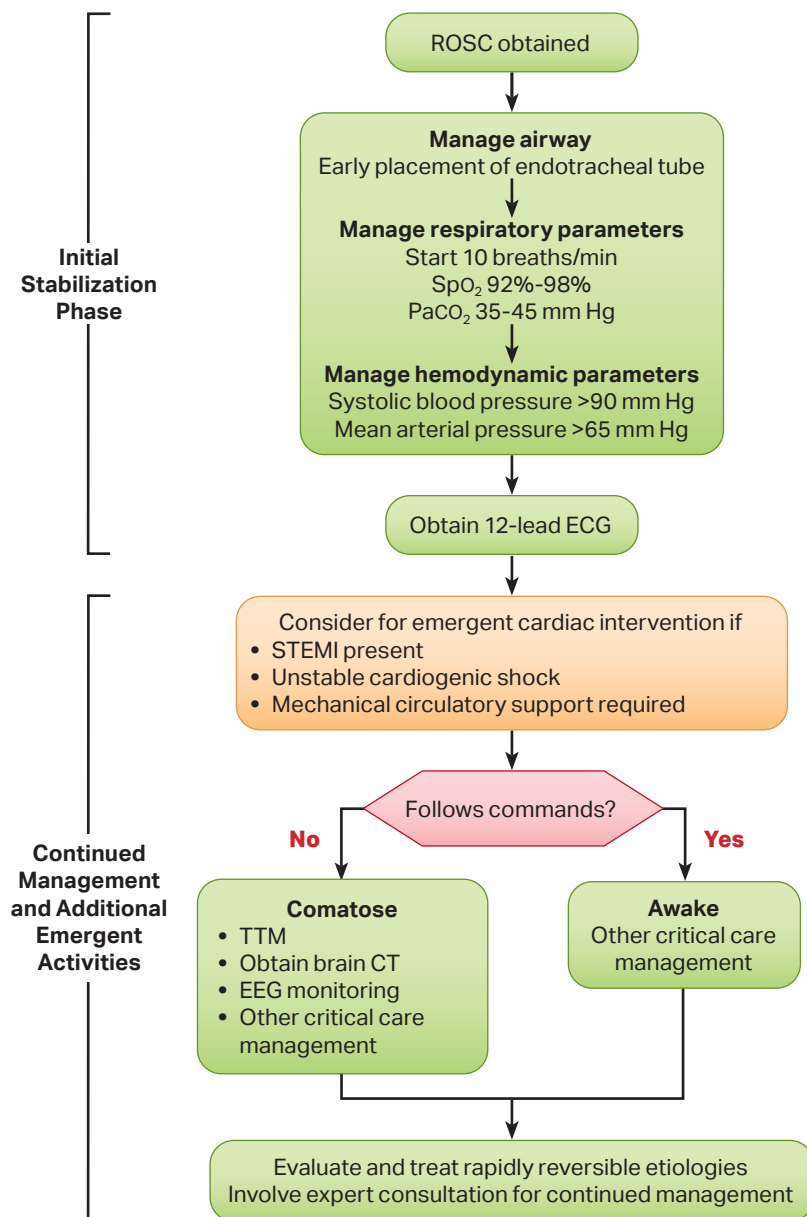
Adult Bradycardia Algorithm



Adult Tachycardia With a Pulse Algorithm



ACLS Healthcare Provider Post-Cardiac Arrest Care Algorithm



Initial Stabilization Phase

Resuscitation is ongoing during the post-ROSC phase, and many of these activities can occur concurrently.

However, if prioritization is necessary, follow these steps:

- **Airway management:**
Waveform capnography or capnometry to confirm and monitor endotracheal tube placement
- **Manage respiratory parameters:**
Titrate FiO_2 for SpO_2 92%-98%; start at 10 breaths/min; titrate to PaCO_2 of 35-45 mm Hg
- **Manage hemodynamic parameters:**
Administer crystalloid and/or vasopressor or inotrope for goal systolic blood pressure >90 mm Hg or mean arterial pressure >65 mm Hg

Continued Management and Additional Emergent Activities

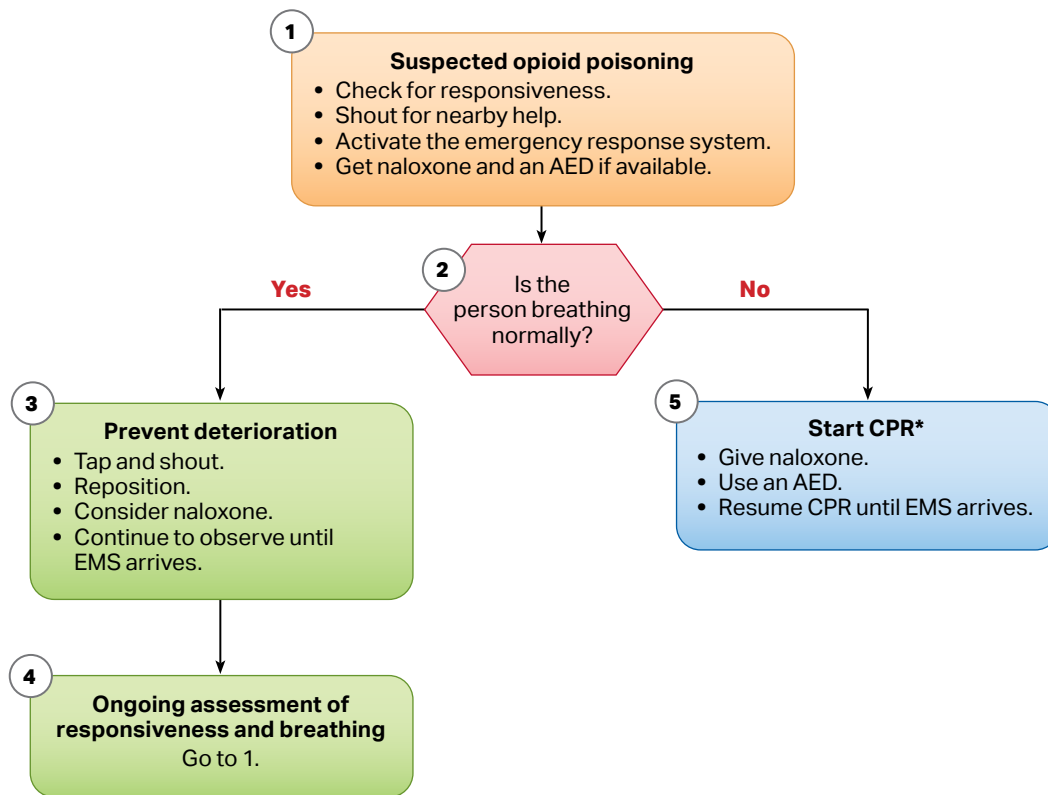
These evaluations should be done concurrently so that decisions on targeted temperature management (TTM) receive high priority as cardiac interventions.

- **Emergent cardiac intervention:**
Early evaluation of 12-lead electrocardiogram (ECG); consider hemodynamics for decision on cardiac intervention
- **TTM:** If patient is not following commands, start TTM as soon as possible; begin at 32-36°C for 24 hours by using a cooling device with feedback loop
- **Other critical care management**
 - Continuously monitor core temperature (esophageal, rectal, bladder)
 - Maintain normoxia, normocapnia, euglycemia
 - Provide continuous or intermittent electroencephalogram (EEG) monitoring
 - Provide lung-protective ventilation

H's and T's

Hypovolemia
Hypoxia
Hydrogen ion (acidosis)
Hypokalemia/hyperkalemia
Hypothermia
Tension pneumothorax
Tamponade, cardiac
Toxins
Thrombosis, pulmonary
Thrombosis, coronary

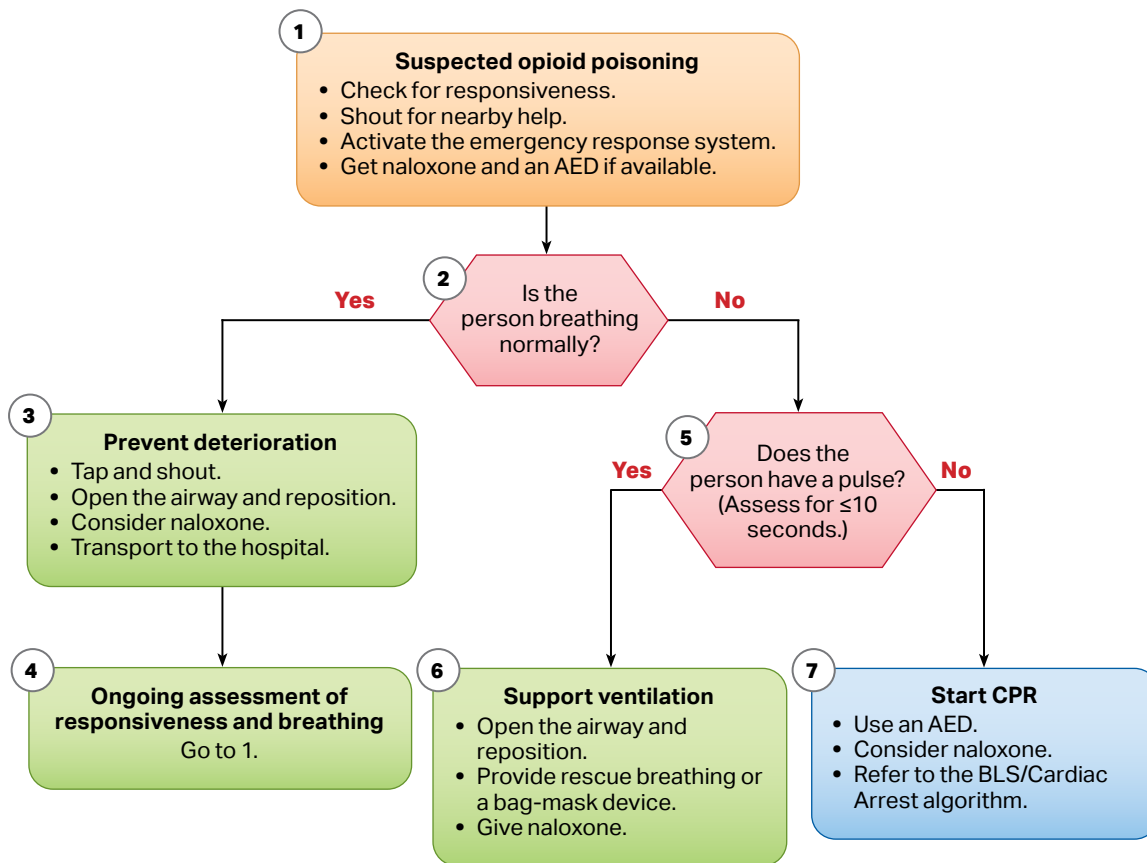
Opioid-Associated Emergency for Lay Responders Algorithm



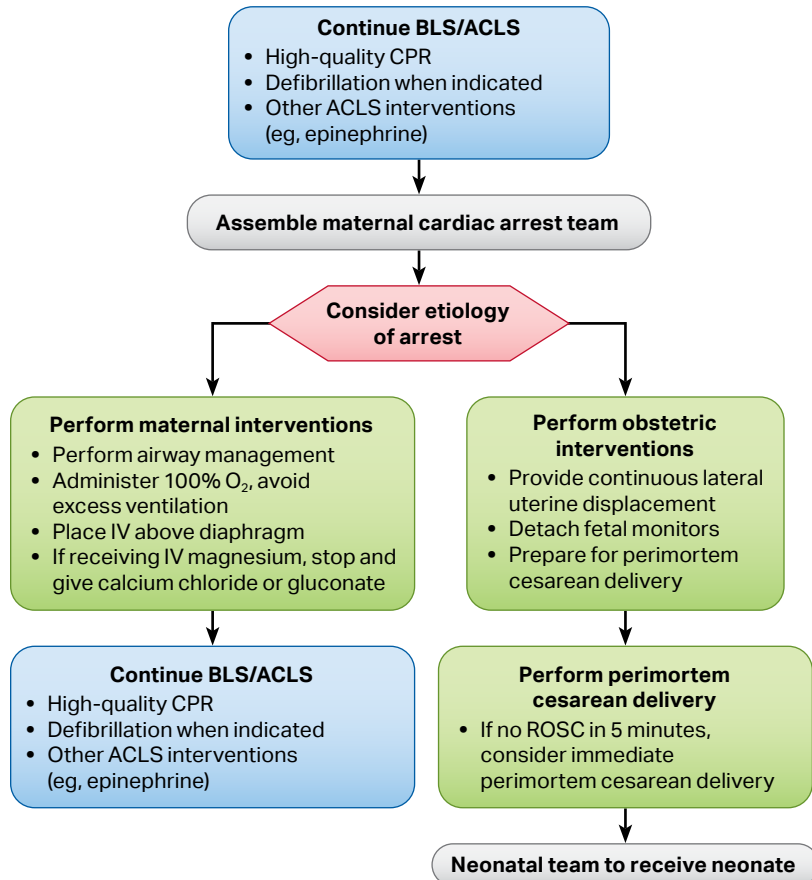
*For adult and adolescent victims, responders should perform compressions and rescue breaths for opioid-associated emergencies if they are trained and perform Hands-Only CPR if not trained to perform rescue breaths. For infants and children, CPR should include compressions with rescue breaths.

© 2020 American Heart Association

Opioid-Associated Emergency for Healthcare Providers Algorithm



Cardiac Arrest in Pregnancy In-Hospital ACLS Algorithm



Maternal Cardiac Arrest

- Team planning should be done in collaboration with the obstetric, neonatal, emergency, anesthesiology, intensive care, and cardiac arrest services.
- Priorities for pregnant women in cardiac arrest should include provision of high-quality CPR and relief of aortocaval compression with lateral uterine displacement.
- The goal of perimortem cesarean delivery is to improve maternal and fetal outcomes.
- Ideally, perform perimortem cesarean delivery in 5 minutes, depending on provider resources and skill sets.

Advanced Airway

- In pregnancy, a difficult airway is common. Use the most experienced provider.
- Provide endotracheal intubation or supraglottic advanced airway.
- Perform waveform capnography or capnometry to confirm and monitor ET tube placement.
- Once advanced airway is in place, give 1 breath every 6 seconds (10 breaths/min) with continuous chest compressions.

Potential Etiology of Maternal Cardiac Arrest

- A** Anesthetic complications
- B** Bleeding
- C** Cardiovascular
- D** Drugs
- E** Embolic
- F** Fever
- G** General nonobstetric causes of cardiac arrest (H's and T's)
- H** Hypertension